

EB-STERIL SA

Internet: www.eb-steril.ch • E-mail: info@eb-steril.ch

STAINLESS STEEL TANK



CPC

TECHNICAL FEATURES

Stainless steel cold-rolled AISI 304 tank (AISI 316 upon request), 2b finish. Cold-forged bottom covers with optimised shape, minimum thickness: 2 mm. Robotized TIG welding process. Pickled and passivated seams.

Hot dip galvanised steel DIN 45706 protection frame with 2 mm thickness. Tank chamber with anti-vibration rubber pads. Palletised base with fork-slot for lift truck and hand pallet-trucks.

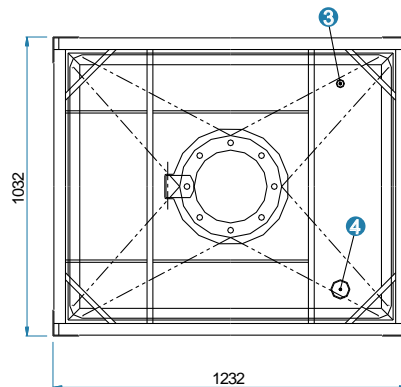
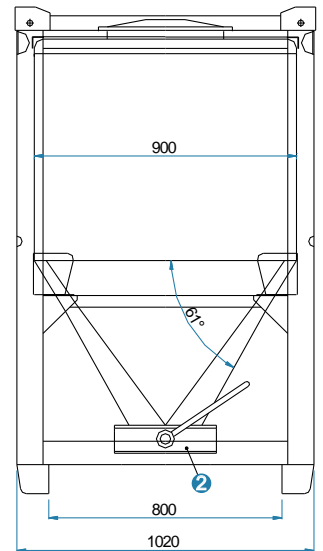
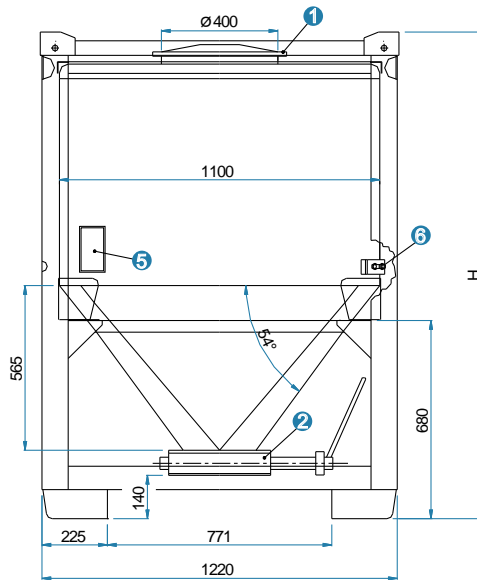
Stacking (UN/ADR/RID standards):
Maximum 3 full superimposed containers.

Transportable products (UN/ADR/RID standards):
- Dangerous products packaging classes I, II and III (UN 11 A/X).
- Max admissible specific weight: **1.2 Kg/dm³**.

ACCESSORIES UPON REQUEST

- Different types of rapid fittings or nipples.
- For the models, without approval, it is possible to make dimensional changes and customised equipment to meet all needs.

- Rectangular section tank with frustum-conical bottom and axial outlet of wide dimensions.
- Suitable for transport and storing of high viscous products or powders and granulates.
- **With UN/ADR/RID approval for the transportation of dangerous products.**



EQUIPMENT

- 400 mm. diameter manhole
 - Lid with clamp closure (standard)
 - Lid with six swing bolts (upon request)
- Butterfly valve, max diam. DN 250
- 1" diam. threaded connection for safety valve:
 - Pressure relief valve (max press. 0.5 bar)
 - Double action (+ 0.5 bar / - 0.02 bar)
- 1" threaded connection
- Identification plate
- Rubber pads

MODEL	capacity liters	tare weight Kg	base thickness mm	height H mm	basic size mm
CPC 500	540	210	2.0	1250	1030 X 1230
CPC 750	745	230	2.0	1430	
CPC 1000	995	250	2.0	1670	
CPC 1250	1200	265	2.0	1830	

SGXC

- Aseptic container for foodstuff industry.
- Stainless steel tank body and structure.
- Top ring for stacking.
- Conical bottom for high viscous products.

TECHNICAL FEATURES

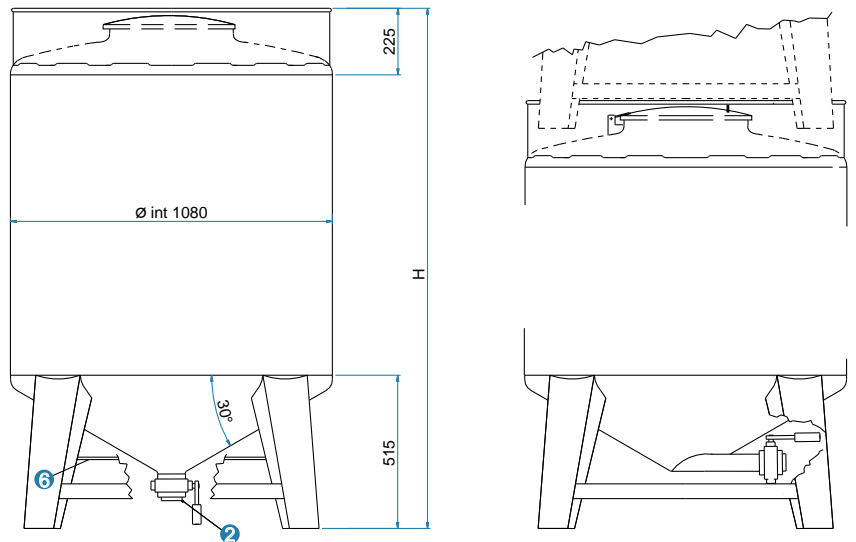
Stainless steel cold-rolled AISI 304 tank (AISI 316 upon request), 2b finish. Cold-forged bottom covers with optimised shape, minimum thickness: 2 mm. Robotized TIG welding process. Pickled and passivated seams.

AISI 304 stainless steel **supporting legs** with locked shape.

AISI 304 stainless steel **stacking ring**.

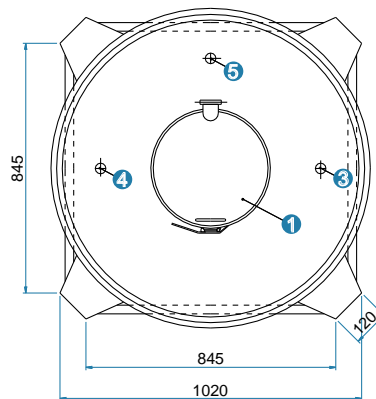
Max hydraulic test pressure:
2.0 bar (200 Kpa).

Max working pressure:
0.5 bar (50 Kpa).



ACCESSORIES UPON REQUEST

- Different types of rapid fittings or nipples.
- Stirrers, washing systems, etc.
- Level gauges.
- Insulation and heating plates.
- Dimensional changes and customised equipment to meet all needs.



EQUIPMENT

- 1 400 mm. diameter manhole
 - Lid with clamp closure (standard)
 - Lid with six swing bolts (upon request)
- 2 Ball or butterfly outlet, max diam. DN 80 (3")
- 3 1" diam. threaded connection for safety valve:
 - Pressure relief valve (max press. 0.5 bar)
 - Double action (+ 0.5 bar / - 0.02 bar)
- 4 2" threaded connection
- 5 Additional connection, max 3" diam. (upon request)
- 6 Fork-slot for handling with lifting truck

MODEL	capacity liters	tare weight Kg	base thickness mm	height H mm
SGCX 500	580	90	1.8	1140
SGCX 750	790	105	1.8	1360
SGCX 1000	1045	120	1.8	1640
SGCX 1100	1130	125	1.8	1740
SGCX 1250	1360	140	2.0	1990
SGCX 1500	1590	155	2.0	2240

SBP

- Palletised tank for storing and internal handling.
- Shaped base with fork-slot for lift truck and manual transpallet.
- Bottom with deep drawn shaped discharge to grant full product discharge.

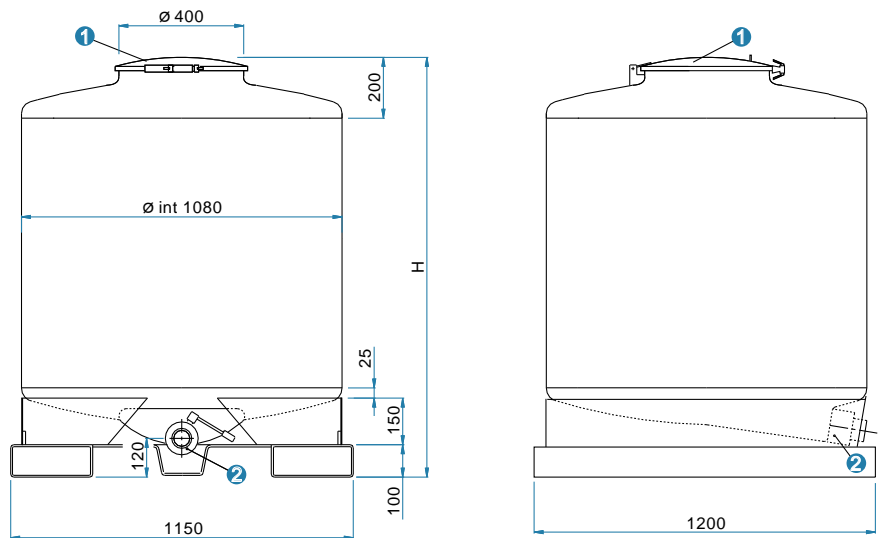
TECHNICAL FEATURES

Stainless steel cold-rolled AISI 304 tank (AISI 316 upon request), 2b finish. Cold-forged bottom covers with optimised shape, minimum thickness: 2 mm. Robotized TIG welding process. Pickled and passivated seams.

DIN 45706 bath-galvanized stainless steel palletised base (painted upon request). Stainless steel ring welded to the tank and screwed to the base.

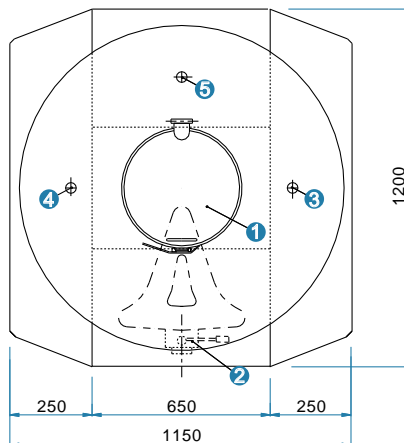
Max hydraulic test pressure:
2.0 bar (200 Kpa).

Max working pressure:
0.5 bar (50 Kpa).



ACCESSORIES UPON REQUEST

- Different types of rapid fittings or nipples.
- Stirrers, washing systems, etc.
- Level gauges.
- Insulation and heating plates.
- Dimensional changes and customised equipment to meet all needs.



EQUIPMENT

- 400 mm. diameter manhole
 - Lid with clamp closure (standard)
 - Lid with six swing bolts (upon request)
- Ball or butterfly outlet, max diam. DN 80 (3")
- 1" diam. threaded connection for safety valve:
 - Pressure relief valve (max press. 0.5 bar)
 - Double action (+ 0.5 bar / - 0.02 bar)
- 2" threaded connection
- Additional connection, max 3" diam. (upon request)

MODEL	capacity liters	tare weight Kg	base thickness mm	height H mm
SBP 500	530	120	1.8	880
SBP 750	735	135	1.8	1110
SBP 1000	997	150	1.8	1390
SBP 1100	1080	155	1.8	1480
SBP 1250	1310	170	2.0	1730
SBP 1500	1540	185	2.0	1985

PL

- **Corner discharge outlet.**
- **Bottom with deep drawn shaped discharge to grant full product discharge.**
- **With UN/ADR/RID approval for the transportation of dangerous products.**

TECHNICAL FEATURES

Stainless steel cold-rolled AISI 304 **tank** (AISI 316 upon request), 2b finish. Cold-forged bottom covers with optimised shape, minimum thickness: 2 mm. Robotized TIG welding process. Pickled and passivated seams.

Hot dip galvanised steel DIN 45706 **protection frame** with 2 mm thickness. Tank chamber with anti-vibration rubber pads. Palletised base with fork-slot for lift truck and hand pallet-trucks.

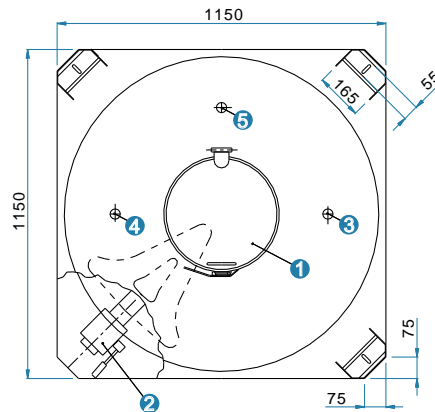
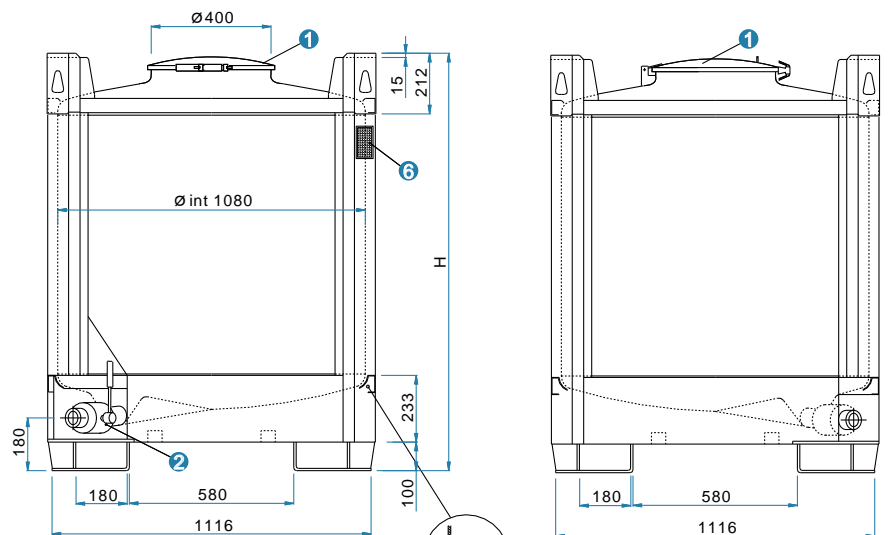
Stacking (UN/ADR/RID standards):
Maximum **2** full superimposed **containers**.

Transportable products (UN/ADR/RID standards):

- Dangerous products, packaging classes II and III with vapour pressure, max 1.1 bar at 50° C.
- Max admissible specific weight: **1.5 Kg/dm³**.

ACCESSORIES UPON REQUEST

- Different types of rapid fittings or nipples.
- Stirrers, washing systems, etc.
- Level gauges.
- Insulation and heating plates.
- For the models, without approval, it is possible to make dimensional changes and customised equipment to meet all needs.



EQUIPMENT

- 1 400 mm. diameter manhole
 - Lid with clamp closure (standard)
 - Lid with six swing bolts (upon request)
- 2 Ball or butterfly outlet, max diam. DN 80 (3")
- 3 1" diam. threaded connection for safety valve:
 - Pressure relief valve (max press. 0.5 bar)
 - Double action (+ 0.5 bar / - 0.02 bar)
- 4 2" threaded connection
- 5 Additional connection, max 3" diam. (upon request)
- 6 Identification plate
- 7 Rubber pads

MODEL	capacity liters	tare weight Kg	base thickness mm	height H mm	basic size mm
PL 500	530	140	1.8	955	1150 X 1150
PL 750	740	160	1.8	1180	
PL 1000	997	180	1.8	1460	
PL 1250	1310	215	2.0	1805	

PH

- Bottom with weld-on central flange.
- Discharge pipe with 90° elbow.
- **With UN/ADR/RID approval for the transportation of dangerous products.**

TECHNICAL FEATURES

Stainless steel cold-rolled AISI 304 tank (AISI 316 upon request), 2b finish. Cold-forged bottom covers with optimised shape, minimum thickness: 2 mm. Robotized TIG welding process. Pickled and passivated seams.

Hot dip galvanised steel DIN 45706 **protection frame** with 2 mm thickness. Tank chamber with anti-vibration rubber pads. Palletised base with fork-slot for lift truck and hand pallet-trucks.

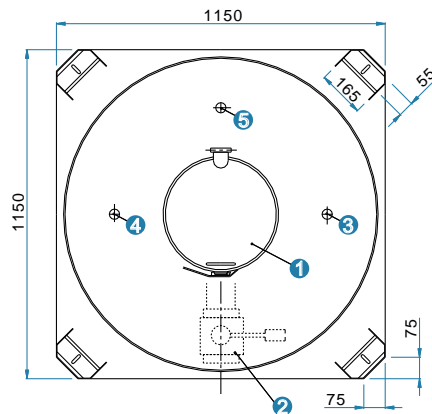
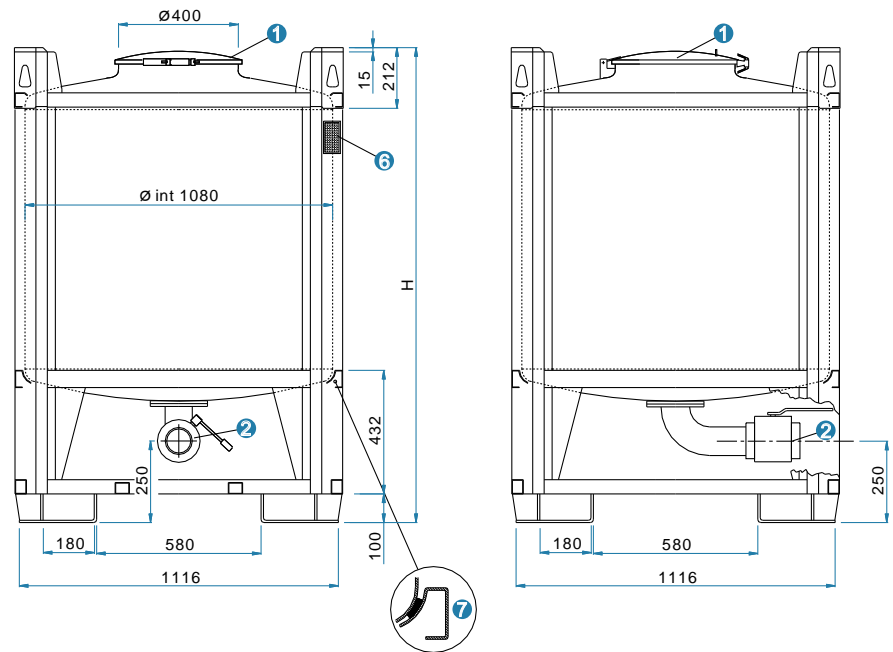
Stacking (UN/ADR/RID standards):
Maximum 2 full superimposed containers.

Transportable products (UN/ADR/RID standards):

- Dangerous products, packaging classes II and III with vapour pressure, max 1.1 bar at 50° C.
- Max admissible specific weight: **1.5 Kg/dm³**.

ACCESSORIES UPON REQUEST

- Different types of rapid fittings or nipples.
- Stirrers, washing systems, etc.
- Level gauges.
- Insulation and heating plates.
- For the models, without approval, it is possible to make dimensional changes and customised equipment to meet all needs.



EQUIPMENT

- 1 400 mm. diameter manhole
 - Lid with clamp closure (standard)
 - Lid with six swing bolts (upon request)
- 2 Ball or butterfly outlet, max diam. DN 80 (3")
- 3 1" diam. threaded connection for safety valve:
 - Pressure relief valve (max press. 0.5 bar)
 - Double action (+ 0.5 bar / - 0.02 bar)
- 4 2" threaded connection
- 5 Additional connection, max 3" diam. (upon request)
- 6 Identification plate
- 7 Rubber pads

MODEL	capacity liters	tare weight Kg	base thickness mm	height H mm	basic size mm
PH 500	530	145	1.8	1155	1150 X 1150
PH 750	740	165	1.8	1380	
PH 1000	997	185	1.8	1660	
PH 1250	1310	220	2.0	2005	

PFC

- Container with conical bottom and wide dimensions axial discharge outlet.
- Suitable for transport and storing of high viscous products.
- **With UN/ADR/RID approval for the transportation of dangerous products.**

TECHNICAL FEATURES

Stainless steel cold-rolled AISI 304 tank (AISI 316 upon request), 2b finish. Cold-forged bottom covers with optimised shape, minimum thickness: 2 mm. Robotized TIG welding process. Pickled and passivated seams.

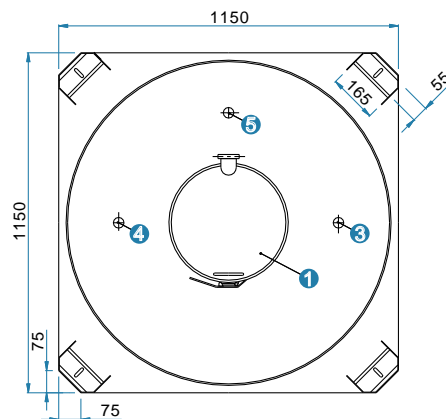
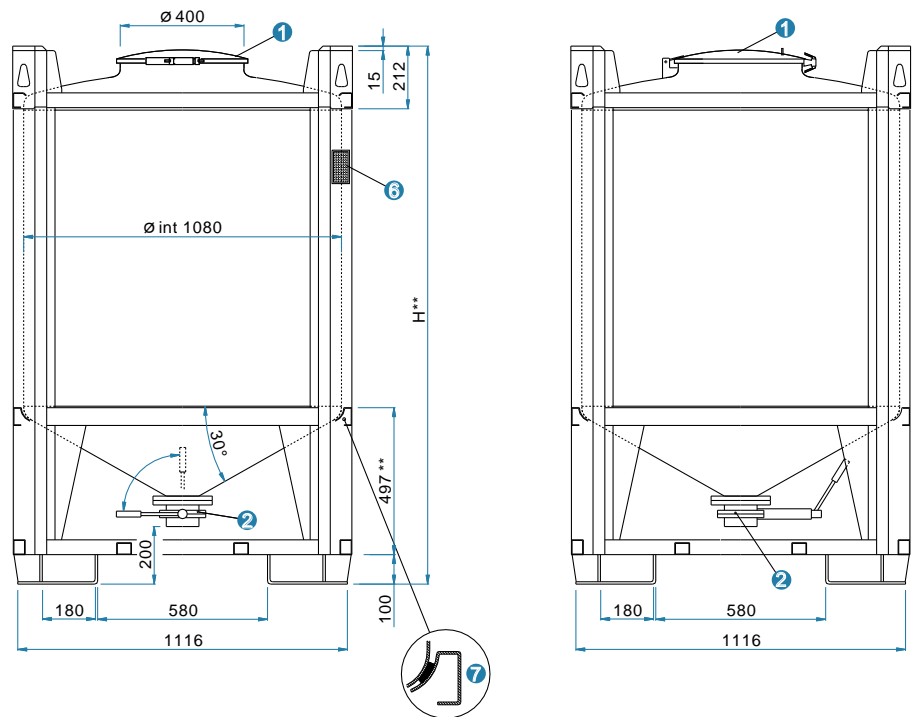
Hot dip galvanised steel DIN 45706 **protection frame** with 2 mm thickness. Tank chamber with anti-vibration rubber pads. Palletised base with fork-slot for lift truck and hand pallet-trucks.

Stacking (UN/ADR/RID standards):
Maximum 2 full superimposed containers.

Transportable products (UN/ADR/RID standards):
- Dangerous products, packaging classes II and III with vapour pressure, max 1.1 bar at 50° C.
- Max admissible specific weight: **1.5 - 2.2 Kg/dm³**.

ACCESSORIES UPON REQUEST

- Different types of rapid fittings or nipples.
- Stirrers, washing systems, etc.
- Level gauges.
- Insulation and heating plates.
- For the models, without approval, it is possible to make dimensional changes and customised equipment to meet all needs.



EQUIPMENT

- 1 400 mm. diameter manhole
 - Lid with clamp closure (standard)
 - Lid with six swing bolts (upon request)
- 2 Ball or butterfly outlet, max diam. DN 100 (4")
- 3 1" diam. threaded connection for safety valve:
 - Pressure relief valve (max press. 0.5 bar)
 - Double action (+ 0.5 bar / - 0.02 bar)
- 4 2" threaded connection
- 5 Additional connection, max 3" diam. (upon request)
- 6 Identification plate
- 7 Rubber pads

height H**

Model with ball valve + 65 mm
Model with gate valve +23 mm.

MODEL	capacity liters	tare weight Kg	base thickness mm	height H** mm	basic size mm
PFC 750	740	180	1.8	1445	1150 X 1150
PFC 1000	997	200	1.8	1660	
PFC 1150	1149	210	2.0	1843	
PFC 1250	1253	225	2.0	1940	

PEC

- Dimensions for stacking with the European cubical containers.
- Side discharge outlet.
- Bottom with deep drawn shaped discharge to grant full product discharge.
- **With UN/ADR/RID approval for the transportation of dangerous products.**

TECHNICAL FEATURES

Stainless steel cold-rolled AISI 304 tank (AISI 316 upon request), 2b finish. Cold-forged bottom covers with optimised shape, minimum thickness: 2 mm. Robotized TIG welding process. Pickled and passivated seams.

Hot dip galvanised steel DIN 45706 protection frame with 3 mm thickness. Tank chamber with anti-vibration rubber pads. Palletised base with fork-slot for lift truck and hand pallet-trucks.

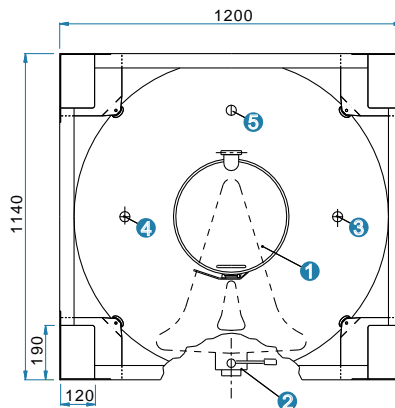
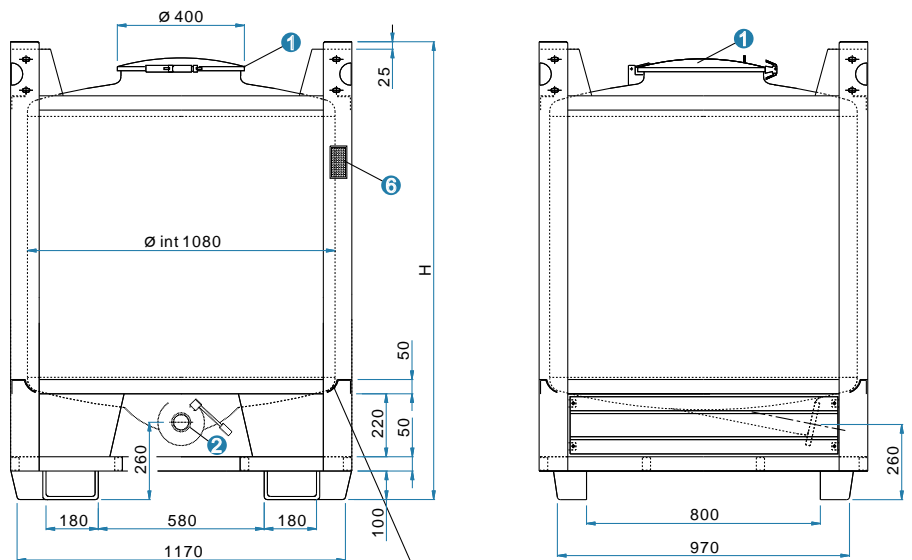
Stacking (UN/ADR/RID standards):
Maximum 3 full superimposed containers.

Transportable products (UN/ADR/RID standards):

- Dangerous products, packaging classes II and III with vapour pressure, max 1.1 bar at 50° C.
- Max admissible specific weight: **1.8 Kg/dm³**.

ACCESSORIES UPON REQUEST

- Different types of rapid fittings or nipples.
- Stirrers, washing systems, etc.
- Level gauges.
- Insulation and heating plates.
- For the models, without approval, it is possible to make dimensional changes and customised equipment to meet all needs.



EQUIPMENT

- ① 400 mm. diameter manhole
 - Lid with clamp closure (standard)
 - Lid with six swing bolts (upon request)
- ② Ball or butterfly outlet, max diam. DN 80 (3")
- ③ 1" diam. threaded connection for safety valve:
 - Pressure relief valve (max press. 0.5 bar)
 - Double action (+ 0.5 bar / - 0.02 bar)
- ④ 2" threaded connection
- ⑤ Additional connection, max 3" diam. (upon request)
- ⑥ Identification plate
- ⑦ Rubber pads

MODEL	capacity liters	tare weight Kg	base thickness mm	height H mm	basic size mm
PEC 750	740	180	1.8	1420	1200
PEC 1000	997	200	1.8	1600	X
PEC 1250	1310	235	2.0	1950	1100

PC

- Side discharge outlet.
- Bottom with deep drawn shaped discharge to grant full product discharge.
- **With UN/ADR/RID approval for the transportation of dangerous products.**

TECHNICAL FEATURES

Stainless steel cold-rolled AISI 304 tank (AISI 316 upon request), 2b finish. Cold-forged bottom covers with optimised shape, minimum thickness: 2 mm. Robotized TIG welding process. Pickled and passivated seams.

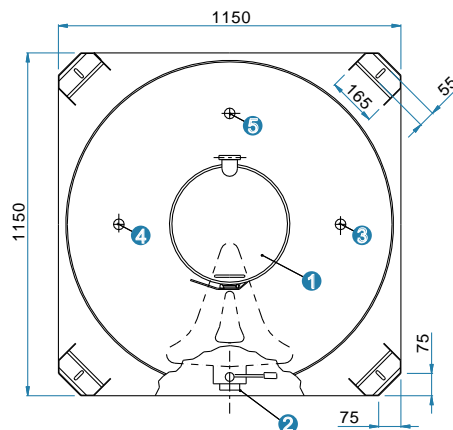
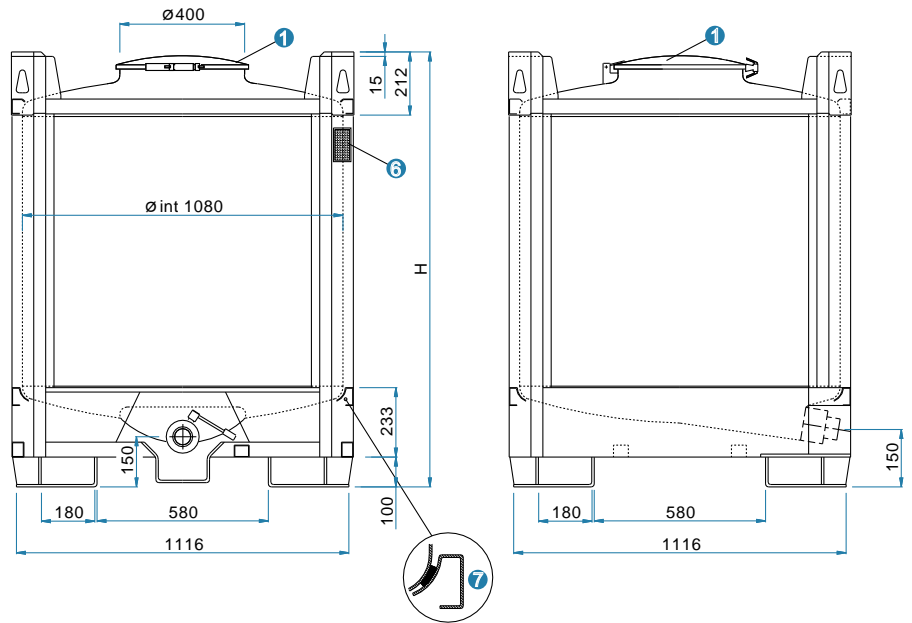
Hot dip galvanised steel DIN 45706 **protection frame** with 2 mm thickness. Tank chamber with anti-vibration rubber pads. Palletised base with fork-slot for lift truck and hand pallet-trucks.

Stacking (UN/ADR/RID standards):
Maximum 2 full superimposed containers.

Transportable products (UN/ADR/RID standards):
- Dangerous products, packaging classes II and III with vapour pressure, max 1.1 bar at 50° C.
- Max admissible specific weight: **1.5 Kg/dm³**.

ACCESSORIES UPON REQUEST

- Different types of rapid fittings or nipples.
- Stirrers, washing systems, etc.
- Level gauges.
- Insulation and heating plates.
- For the models, without approval, it is possible to make dimensional changes and customised equipment to meet all needs.



EQUIPMENT

- 1 400 mm. diameter manhole
 - Lid with clamp closure (standard)
 - Lid with six swing bolts (upon request)
- 2 Ball or butterfly outlet, max diam. DN 80 (3")
- 3 1" diam. threaded connection for safety valve:
 - Pressure relief valve (max press. 0.5 bar)
 - Double action (+ 0.5 bar / - 0.02 bar)
- 4 2" threaded connection
- 5 Additional connection, max 3" diam. (upon request)
- 6 Identification plate
- 7 Rubber pads

MODEL	capacity liters	tare weight Kg	base thickness mm	height H mm	basic size mm
PC 500	530	140	1.8	955	1150 X 1150
PC 750	740	160	1.8	1180	
PC 1000	997	180	1.8	1460	
PC 1250	1310	215	2.0	1805	

MTL

- Storage tank with stainless steel supporting vertical legs.
- Bottom with deep drawn shaped discharge to grant full product discharge.

TECHNICAL FEATURES

Stainless steel cold-rolled AISI 304 tank (AISI 316 upon request), 2b finish. Cold-forged bottom covers with optimised shape, minimum thickness: 2 mm. Robotized TIG welding process. Pickled and passivated seams.

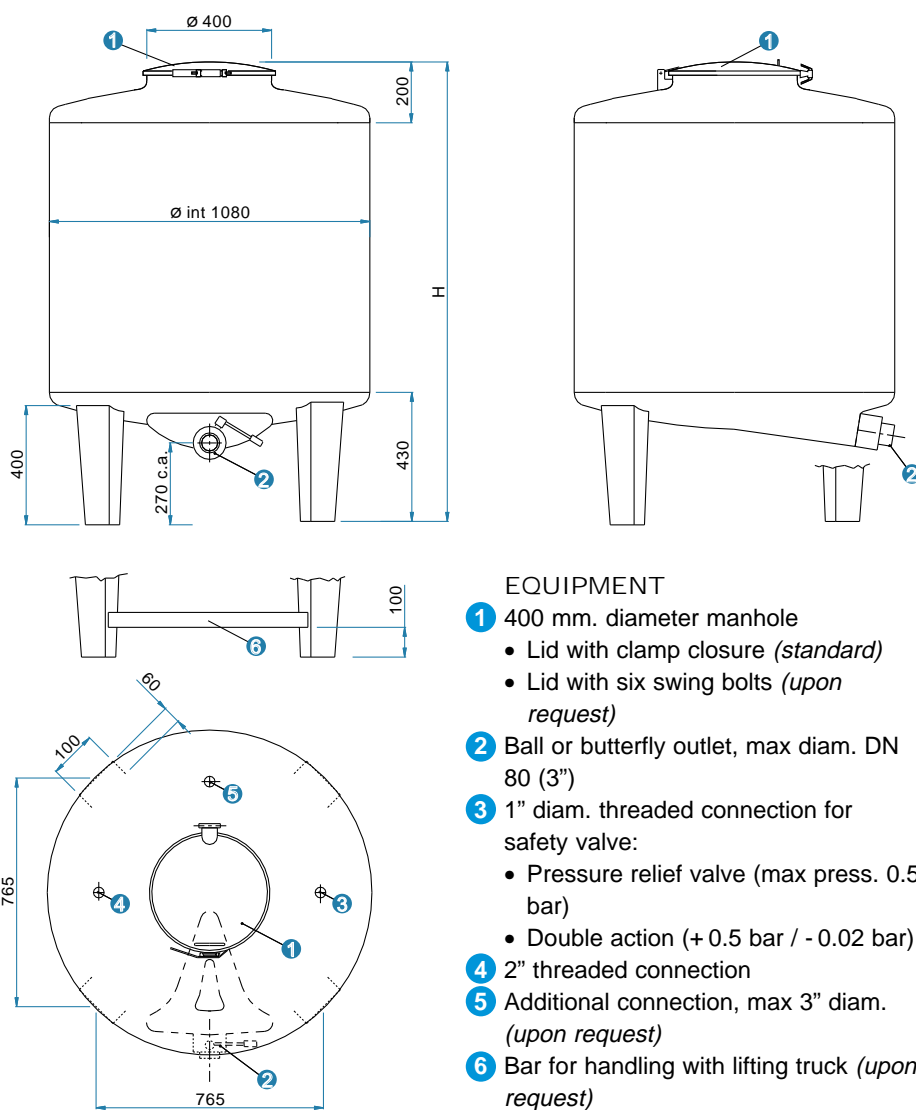
AISI 304 stainless steel **supporting legs**. Height can be modified upon request.

Max hydraulic test pressure:
2.0 bar (200 Kpa).

Max working pressure:
0.5 bar (50 Kpa).

ACCESSORIES UPON REQUEST

- Different types of rapid fittings or nipples.
- Stirrers, washing systems, etc.
- Level gauges.
- Insulation and heating plates.
- Dimensional changes and customised equipment to meet all needs.



EQUIPMENT

- 400 mm. diameter manhole
 - Lid with clamp closure (standard)
 - Lid with six swing bolts (upon request)
- Ball or butterfly outlet, max diam. DN 80 (3")
- 1" diam. threaded connection for safety valve:
 - Pressure relief valve (max press. 0.5 bar)
 - Double action (+ 0.5 bar / - 0.02 bar)
- 2" threaded connection
- Additional connection, max 3" diam. (upon request)
- Bar for handling with lifting truck (upon request)

MODEL	capacity liters	tare weight Kg	base thickness mm	height H mm
MTL 500	530	90	1.8	1030
MTL 750	735	105	1.8	1250
MTL 1000	997	120	1.8	1530
MTL 1100	1080	125	1.8	1630
MTL 1250	1310	140	2.0	1880
MTL 1500	1540	155	2.0	2130
MTL 2000	2000	200	2.0	2630

MTH

- Storing tank with stainless steel supporting vertical legs.
- Discharge pipe with 90° elbow.

TECHNICAL FEATURES

Stainless steel cold-rolled AISI 304 tank (AISI 316 upon request), 2b finish. Cold-forged bottom covers with optimised shape, minimum thickness: 2 mm. Robotized TIG welding process. Pickled and passivated seams.

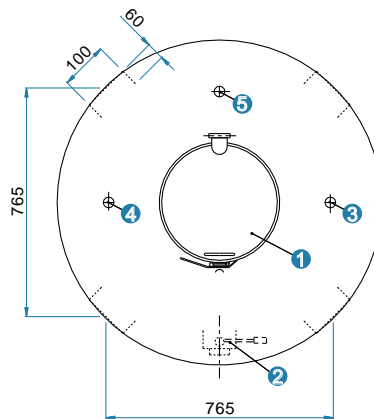
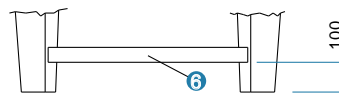
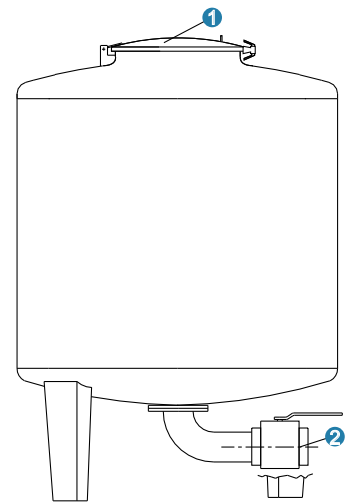
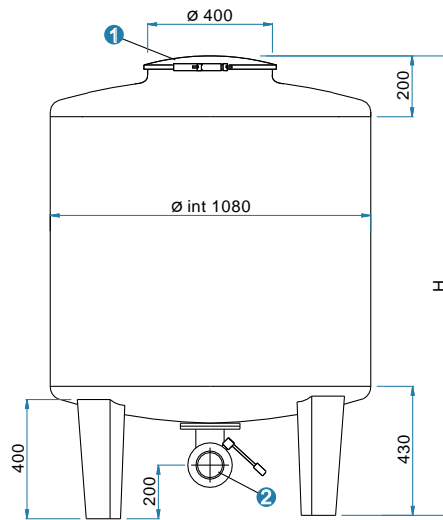
AISI 304 stainless steel **supporting legs**. Height can be modified upon request.

Max hydraulic test pressure:
2.0 bar (200 Kpa).

Max working pressure:
0.5 bar (50 Kpa).

ACCESSORIES UPON REQUEST

- Different types of rapid fittings or nipples.
- Stirrers, washing systems, etc.
- Level gauges.
- Insulation and heating plates.
- Dimensional changes and customised equipment to meet all needs.



EQUIPMENT

- 400 mm. diameter manhole
 - Lid with clamp closure (standard)
 - Lid with six swing bolts (upon request)
- Ball or butterfly outlet, max diam. DN 80 (3")
- 1" diam. threaded connection for safety valve:
 - Pressure relief valve (max press. 0.5 bar)
 - Double action (+ 0.5 bar / - 0.02 bar)
- 2" threaded connection
- Additional connection, max 3" diam. (upon request)
- Bar for handling with lifting truck (upon request)

MODEL	capacity liters	tare weight Kg	base thickness mm	height H mm
MTH 500	530	90	1.8	1030
MTH 750	735	105	1.8	1250
MTH 1000	997	120	1.8	1530
MTH 1100	1080	125	1.8	1630
MTH 1250	1310	140	2.0	1880
MTH 1500	1540	155	2.0	2130
MTH 2000	2000	200	2.0	2630

MTFC

- Storage tank with stainless steel supporting vertical legs.
- Conical bottom and wide dimensions axial outlet.
- Suitable for very viscous products.

TECHNICAL FEATURES

Stainless steel cold-rolled AISI 304 tank (AISI 316 upon request), 2b finish. Cold-forged bottom covers with optimised shape, minimum thickness: 2 mm. Robotized TIG welding process. Pickled and passivated seams.

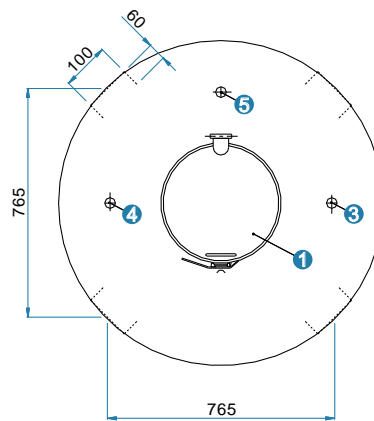
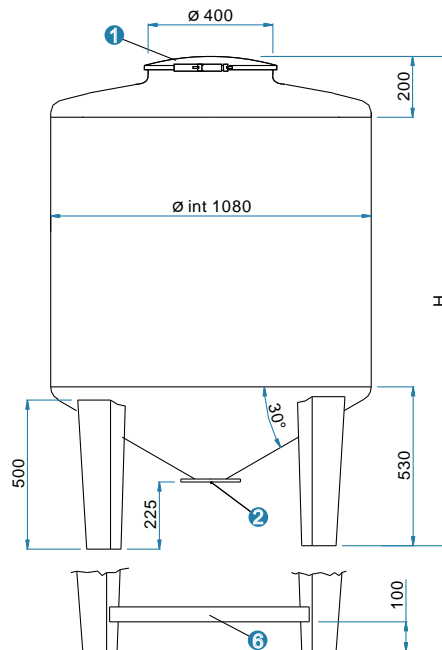
AISI 304 stainless steel **supporting legs**. Upon request with base bars for handling with lifting truck and manual transpallet.

Max hydraulic test pressure:
2.0 bar (200 Kpa).

Max working pressure:
0.5 bar (50 Kpa).

ACCESSORIES UPON REQUEST

- Different types of rapid fittings or nipples.
- Stirrers, washing systems, etc.
- Level gauges.
- Insulation and heating plates.
- Dimensional changes and customised equipment to meet all needs.



EQUIPMENT

- 400 mm. diameter manhole
 - Lid with clamp closure (standard)
 - Lid with six swing bolts (upon request)
- Ball or butterfly outlet, max diam. DN 100 (4")
- 1" diam. threaded connection for safety valve:
 - Pressure relief valve (max press. 0.5 bar)
 - Double action (+ 0.5 bar / - 0.02 bar)
- 2" threaded connection
- Additional connection, max 3" diam. (upon request)
- Bar for handling with lifting truck (upon request)

MODEL	capacity liters	tare weight Kg	base thickness mm	height H mm
MTFC 500	580	90	1.8	1130
MTFC 750	790	105	1.8	1350
MTFC 1000	1045	120	1.8	1630
MTFC 1100	1130	125	1.8	1730
MTFC 1250	1360	140	2.0	1980
MTFC 1500	1590	155	2.0	2230
MTFC 2000	2050	200	2.0	2730

CRC

- Rectangular section tank with conical bottom and wide dimensions axial outlet.
- Removable upper top with complete opening.
- *Suitable for transport and storing of high viscous products or powders and granulates.*

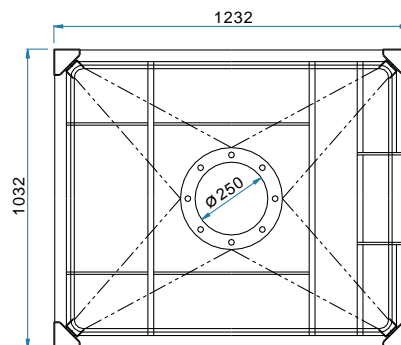
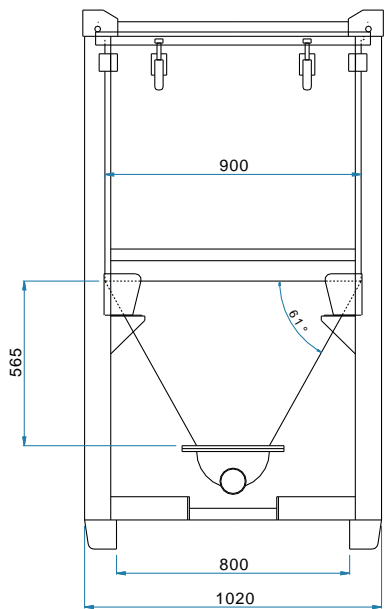
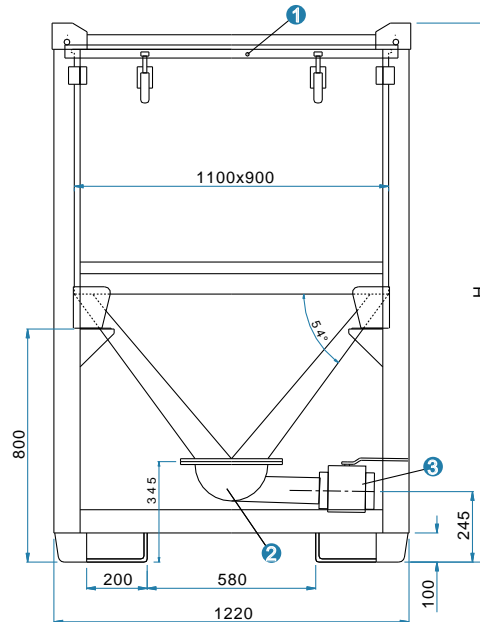
TECHNICAL FEATURES

Stainless steel cold-rolled AISI 304 tank (AISI 316 upon request), 2b finish. Cold-forged bottom covers with optimised shape, minimum thickness: 2 mm. Robotized TIG welding process. Pickled and passivated seams.

Hot dip galvanised steel DIN 45706 protection frame with 2 mm thickness. Tank chamber with anti-vibration rubber pads. Palletised base with fork-slot for lift truck and hand pallet-trucks.

ACCESSORIES UPON REQUEST

- Different types of rapid fittings or nipples.
- Stirrers, washing systems, etc.
- Level gauges.
- Insulation and heating plates.
- It is possible to make dimensional changes and customised equipment to meet all needs.



EQUIPMENT

- 1 Removable top with 8 rapid tie bars
 - Upon request, superior bottom welded with hatchway 400 mm Diameter.
- 2 Flanged outlet group with DN 250 hemispherical sump and horizontal DN 80 pipeline
 - Upon request direct outlet with butterfly valve or gate valve DN 250
- 3 Ball or butterfly outlet or gate valve, max diam. DN 80 (3")

MODEL	capacity liters	tare weight Kg	base thickness mm	height H mm	basic size mm
CRC 500	540	210	2.0	1350	1032 X 1232
CRC 750	790	230	2.0	1600	
CRC 1000	1050	250	2.0	1840	
CRC 1250	1210	265	2.0	2000	